

DEKTITE® & RETROFIT DEKTITE®

Pipe Flashings



Thank you for ordering from www.JakeSales.com

APPLICATIONS

Plumbing, Heating, Air Conditioning, Electrical, Exhaust Vents, etc.

PRODUCT SPECIFICATIONS

Pipe Diameter Ranges

.....	1/4" to 18" Dektite
.....	3/4" to 10" Retrofit
.....	1/4" to 18" Silicone

MATERIALS

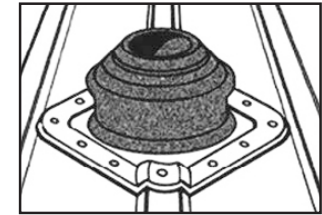
EPDM	Standard & Retrofit
Silicone	High Temperature
.....	Standard & Combo

PRODUCT FEATURES

- Made of long life, flexible, weather-proof gray EPDM rubber or red silicone.
- Flexible, corrosion resistant aluminum base conforms to any panel configuration.
- EPDM and silicone will not crack or break.
- Pipe diameter markings are clearly indicated for accurate fitting.
- Designed for 1/4" to 18" diameter pipes.
- One piece construction is easy to install.
- Pleated cone adjusts to any roof pitch and allows for complete flexibility.
- EPDM has a continuous service temperature range of -58°F to +239°F and up to 302°F intermittently.

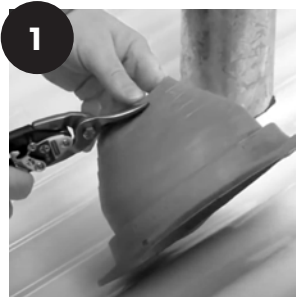
- Silicone has a continuous service temperature range of -58°F to +392°F and up to 482°F intermittently.
- Proven resistance to ozone and ultra-violet light.

NOTE: When installing square Dektite® pipe boots on a roof with a pitch of 10/12 to 12/12, you must install with a corner pointing up in a diamond shape. (Fig. 1) Installing it squarely would result in the Dektite® acting as a water dam for water running off the roof, instead of channeling it around the pipe.



(Fig. 1)

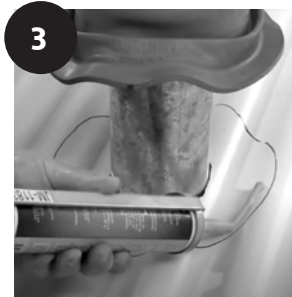
Dektite® Installation Steps



(1) Cut Dektite® cone where indicated for the relevant pipe size. Use tin snips or scissors. **DO NOT USE** utility knife.

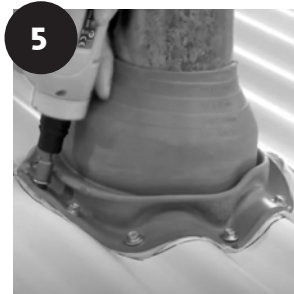


(2) Slide Dektite® flashing down over pipe. Water can be used as a lubricant. Then draw outline around base.



(3) Apply neutral cure silicone sealant on the inside of the drawn outline.

(4) Press Dektite® base into contours of panel configuration.

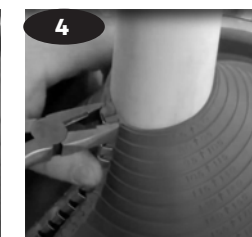


(5) Fasten Dektite® to surface with self-tapping or self-drilling screws. Apply additional sealant around base if desired.

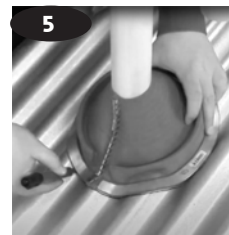
Dektite® Retrofit Installation Steps



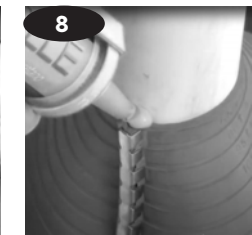
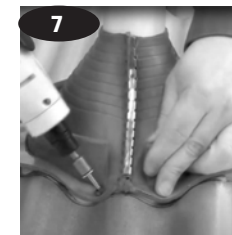
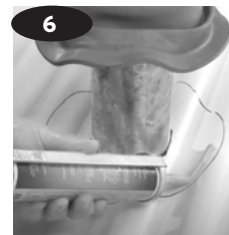
(1) Check pipe size and clean area to be flashed. Cut required diameter using tin snips following size markings on the Dektite® Retrofit. **DO NOT USE** utility knife. Leave a minimum of 25mm straight collar against the pipe to provide maximum seal. **(2)** Begin cutting on the side leaving the mechanical locking joinder 'til last. To cut thru the joinder, use a scissoring action with the tin snips. **(3)** Wrap Dektite®



Retrofit around the pipe. Engage the top section of the mechanical locking joinder first, then proceed down the until the joinder is completely engaged. If the top of the joinder will not reach around to engage, cut the Dektite® Retrofit again at the next larger size marking. **(4)** Crimp joinder tightly, commencing at the top by squeezing joinder "fingers" with pliers. Great force is not required to ensure closure.



(5) Slide Dektite® Retrofit down over pipe. Water can be used as a lubricant. Then draw outline around base. **(6)** Apply neutral cure silicone sealant on the inside of the drawn outline. Press Dektite® Retrofit base into contours of the roof panel configuration. **(7)** Attach Dektite® Retrofit to the roof panel with self-drilling



screws. Fasteners should be installed as necessary to avoid gaps between the Dektite® Retrofit base and the roof panel. Fasten with 25mm on both sides of the mechanical locking joinder. **(8)** Apply additional sealant around the top of the Dektite® Retrofit and the mechanical locking joinder seam.

"For God so loved the world, that he gave his only begotten Son, that whosoever believeth in him should not perish, but have everlasting life." John 3:16